



Aeolos-V

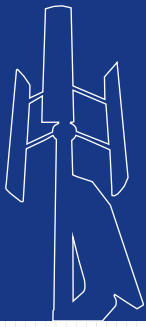
Vertical Wind Turbine Brochure

Aeolos wind turbine
SINCE 1986



Aeolos-V 1kW

AEOLOS



Aeolos-V
windturbinestar.com

Aeolos wind turbine
SINCE 1986



Specification

Generator Type: Three Phase
Permanent Magnet

Rotor Height: 2.8 m (9.19 ft)

Rotor Width: 2.0 m (6.56 ft)

Turbine Weight: 78 kg (173.37 lbs)

Blades Material: Aluminum Alloy

Blade Quantity: 3 pcs

Working Temperature: -20 °C to 50 °C

Design Lifetime: 20 years

Performance

Rated Power: 1000 W

Max Output Power: 1500 W

Cut In Wind Speed: 2.0 m/s (4.46 mph)

Rated Wind Speed: 10 m/s (22.3 mph)

Survival Wind Speed: 50 m/s (111.5 mph)

Generator Efficiency: 96%

Noise Level: < 45 dB(A)

Warranty: 5 year

Safety

Blades RPM Limitation: 320 RPM

PWM Dump Load: 2kW Box

Mechanical Brake: Manual

Optional

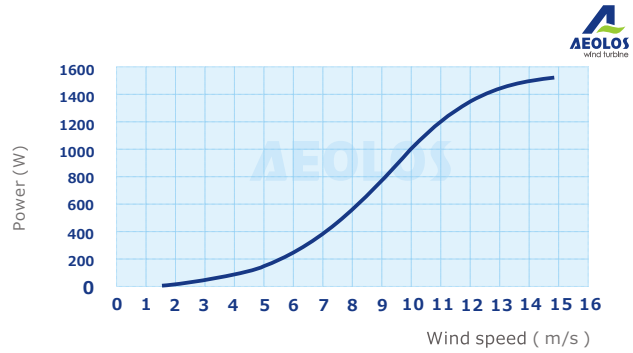
Remote Monitoring System (Internet/Wireless)

Auto Hydraulic Brake System (Unattended Site)

Off Grid: 48 V

Grid Tie: 220 V

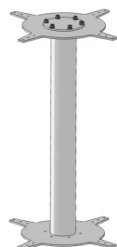
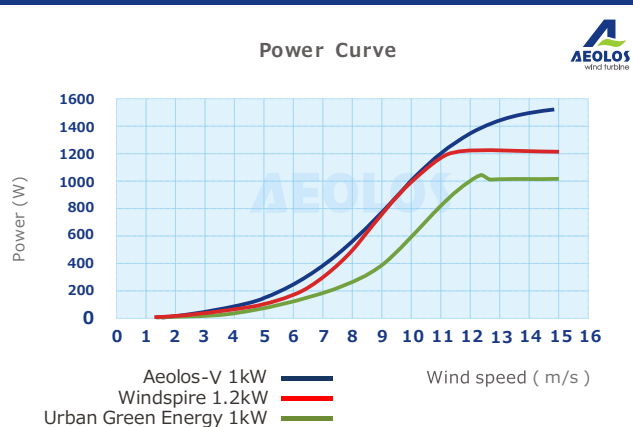
Aeolos-V 1kW Power Curve



Aeolos-V 1kW Wind Turbine Annual Energy Output

Wind Speed(m/s)	Annual Energy Output (kWh)	Wind Speed(m/s)	Annual Energy Output (kWh)
3 m/s	307 kWh	8 m/s	5080 kWh
4 m/s	748 kWh	9 m/s	7008 kWh
5 m/s	1314 kWh	10 m/s	8760 kWh
6 m/s	1927 kWh	11 m/s	10512 kWh
7 m/s	3504 kWh	12 m/s	12088 kWh

Aeolos-V 1kW VS UGE 1kW/Windspire 1.2kW



5 YEAR WARRANTY



Aeolos Wind Energy, Ltd (UK)
27 Old Gloucester Street, London WC1N 3AX
United Kingdom
Tel: +44 208 242 1884
E-mail:sales@windturbinestar.com





**Aeolos wind turbine
SINCE 1986**



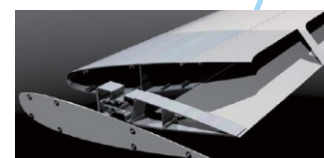
Why Choose Aeolos V 1 kW Wind Turbine?

Triple Safety Protection

Special Blade Design: Aeolos blades use the special aerodynamic design which limits the max rotating speed to 320 rpm even the wind speed is 30m/s or 40m/s. It is more safe and reliable than traditional vertical axis wind turbine.

PWM Dump Load: Aeolos-V 1kW wind turbine has the 2kW dump load box with PWM loading function. This will consume the over power output and control the voltage in strong wind speed.

Mechanical Brake: The manual mechanical brake can stop the wind turbine for maintenance or typhoon coming. We have the auto hydraulic brake system for remote installation site without people checking.

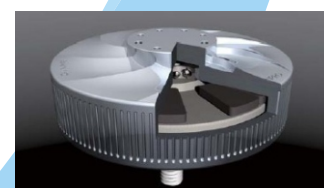


High Efficiency

Low Cut-in Wind Speed: Aeolos-V 1kW could start up with 1.5m/s wind speed and has the power output in 2.5m/s to inverter. This is more efficient than the vertical wind turbines with a 3.5m/s or even 4.5m/s cut in wind speed.

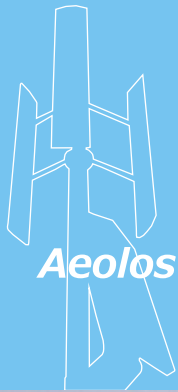
More Annual Output: According to the AWEA standard, Aeolos-V 1kW annual output is 1314 kWh at 5m/s wind speed. The annual output at 10m/s is 8760 kWh.

MPPT Charger For Off Grid: Aeolos-V 1kW use 48V MPPT charging controller to increase the charging efficiency to 94%. It can charge the battery bank when wind speed is above 3.0m/s.



5 YEAR WARRANTY



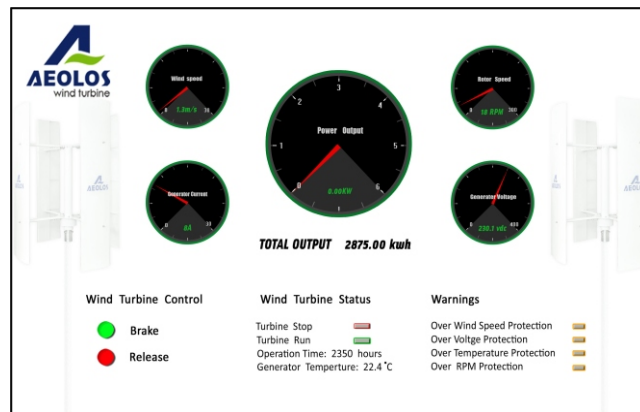


**Aeolos wind turbine
SINCE 1986**



Intelligence Control

Remote Monitoring System: Customer can remote monitor the wind turbine operation, wind speed and power output in office, home, airport and anywhere through the internet.



Auto Hydraulic Brake System: It is suitable for the remote installation sites, like the island, telecommunication tower station which does not have people checking and monitoring. This system can auto stop the wind turbine in over voltage, over wind speed, generator over temperature and all any other faults. It can auto release the wind turbine to run after the abnormal warnings.



5 YEAR WARRANTY



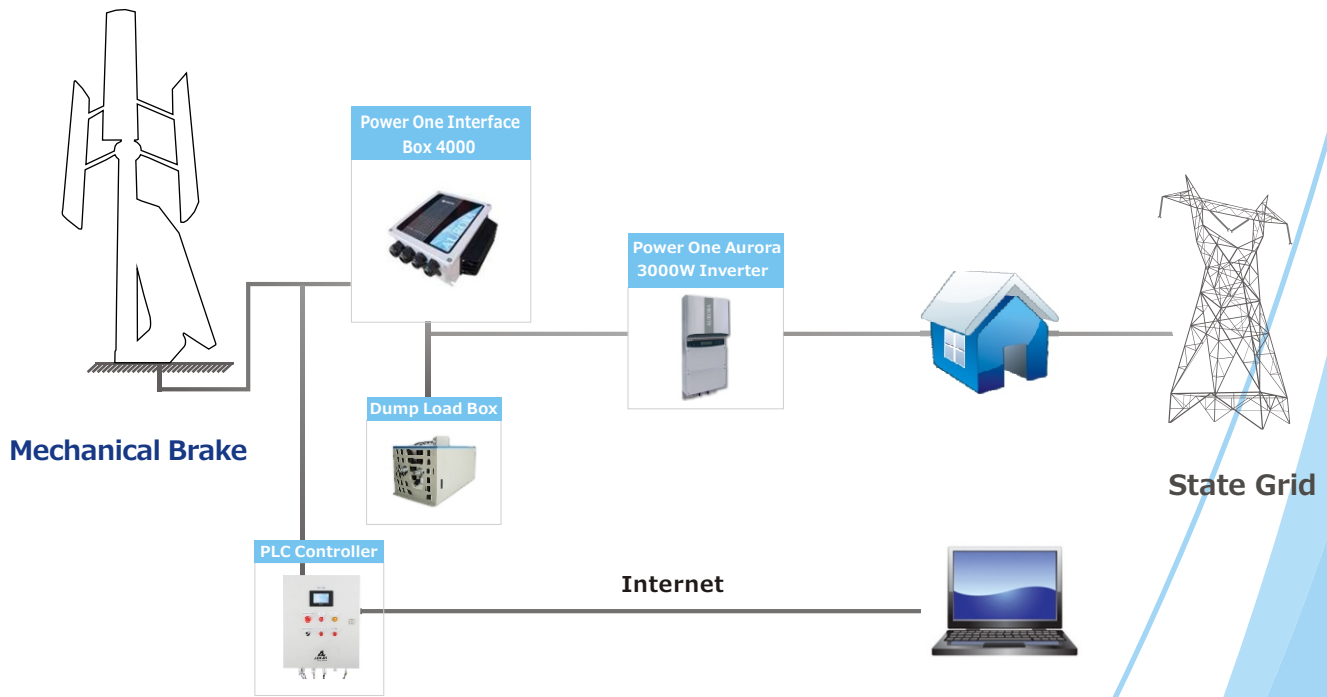


Aeolos wind turbine
SINCE 1986

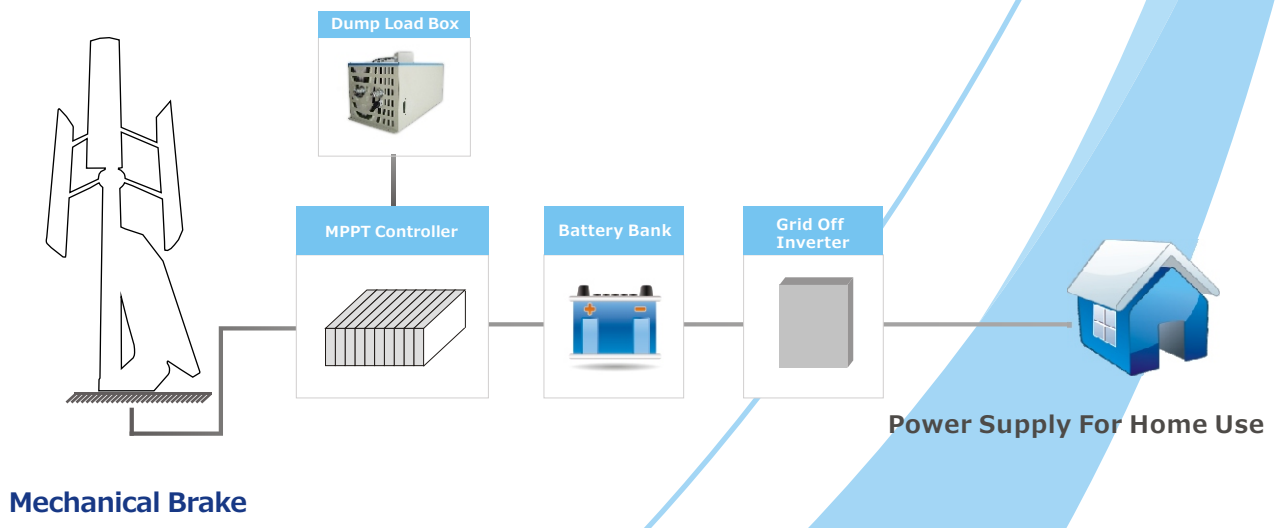


Wiring Diagram

Grid-on



Grid-off



5 YEAR WARRANTY

